



**THEOLOGICAL
EDUCATION by
EXTENSION**

PROSPECTUS

FEBRUARY 2019

Foreword

Papua New Guinea is thoroughly evangelized at the face level. What we need in Papua New Guinea Churches today is a deeper understanding of Gods' word. We are reminded of *Hosea 4:6 where it states; "My people are destroyed from lack of knowledge" (NIV)*. Lack of Gods' knowledge has made many of our church leaders and members dry. The zeal, enthusiasm and the impetus seemed to have faded. There is a spiritual hunger for sound teachings of Gods' word across our denominations. Hence we experience churches being split into factions, false teachings and cultic movements with syncretize gospel emerge from the church.

Thus CLTC as a reservoir of God's truth has brought God's word to where people are and have impacted a lot of lives resulting true transformation and change to many individuals in Papua New Guinea, the South Pacific Islands and elsewhere through her TEE program. This prospectus aims to help you grasp this very essential program that has been a real blessing to many in Papua New Guinea and the South Pacific in their spiritual journey.

Isaac Pulupe
Associate Dean
Distance Education (TEE)
Christian Leaders Training College
Banz Campus

1. General Information

1.1 History of TEE

Guatemala in the Central America is the birth place of TEE since 1963. There was a rapid growth of the Presbyterian churches in the rural areas of Guatemala giving the only Seminary located in the capital city insufficient capacity to train enough pastors to meet the needs of the growing churches. Even those graduate from the Seminary didn't wanted to go back to their rural areas, because they became accustomed to the city life and there were also demand for ministry in the city. With this problem the faculty planned to take the teaching out to the rural areas where most of the local churches were located.

1.2 What is TEE?

TEE means Theological Education by Extension. Theology mean the study of God, Education means training/study and Extension mean study or training taking place at the place of the student.

TEE is simply decentralized theological education; it is a field based approach that does not interrupt the learners' productive relationships to society. TEE does not replace the traditional Bible College but works side by side. Both roles are vital.

1.3 Who is it for?

TEE is for everyone, for Bible college students, missionaries, High School Students, public servants, people in the village, and pastors/lay workers etc, who want to enrich and enhance their knowledge of God, who want to come to a residential Bible College but are unable to, or to help develop their teaching and preaching in their churches. TEE is for everyone.

1.4 What is CLTC TEE?

CLTC TEE means that Christian Leaders' Training College (CLTC) is the source and developer of all the TEE courses received throughout PNG and Pacific. Though CLTC TEE is one of several hundred TEE programs around the world, the TEE courses received around PNG and Pacific are all produced by CLTC.

2. The Three Main Components of TEE

Although there are many differences between individual TEE programs around the world, TEE has a distinctive format. As developed in Guatemala, TEE has three specific components:

2.1 Home Study

The materials are written in a self-learning style. Students therefore do these by themselves at home. CLTC TEE is as short as two study units and as long as ten study units. Students do these study units by themselves at home. Normally one unit of study is covered in one week. Students should be ready to commit themselves to 3-4 hours of homework for each unit of study.

2.2 Practical Assignments

There is a project or a practical assignment to be done for each study unit. These help students to put into practice what they are learning. (Not all of the CLTC TEE courses include practical assignments at present. Those that don't will be modified later.)

2.3 Regular Small Group Seminars

Seminars led by a tutor are a key part of TEE. They provide the opportunity for TEE students to share together what they have been studying and doing. This helps in the learning process and provides mutual encouragement. Through the TEE seminar, the joy of fellowship is added to the joy of learning.

<p>TRUE TEE INTEGRATES THESE THREE ESSENTIAL ELEMENTS</p>
--

3. Historical TEE Development at CLTC

It was Dr John Hitchen of Christian Leaders Training College in particular who helped to spread the idea of TEE in Papua New Guinea. This was done through different papers and presentations to Evangelical Alliance Meetings and Bible college gatherings in early 1970s. The basic idea for CLTC was to take the benefits of theological training out to where the people were rather than requiring students to become full-time students first.



CLTC embarked on its first TEE type course in 1975 with a small group of 12 external students in Mt Hagen, Western Highlands Province of Papua New Guinea. Towards its fourth year 5 courses were completed and CLTC already had a national network of 25 TEE centers involving around 265 external students in 1978.



In 1980 a TEE workshop was hosted by the Pacific TEE coordinator, Patricia Harrison, who gave good grounding for the early TEE course writers. People like Ian Marlins, David and Marilyn Rawsome, Alison Weymouth and other CLTC wrote many of the TEE courses

Statistics: 1979 - 2018

Students Commencing and Completing Courses

English: All Courses	Started	Completed
Isolated Students	6187	3518
Group Students	12980	8168
Tok Pisin: All Courses	Started	Completed
Isolated Students	1144	819
Group Students	7745	4661
Other Countries	250	198
Total	26,956	16,429
Non Completion	10,527	

4. The Purpose of Theological Education by Extension (TEE)

4.1 Vision

We are committed to taking sound Biblical teaching to Bible Schools and to all people in villages, towns and cities in Papua New Guinea and the South Pacific through our TEE materials, online resources and other electronic methods.

4.2 Mission

CLTC TEE exists to empower believers in PNG and the South Pacific by providing TEE materials through print media, online and other electronic devices so that they can study God's Word in their own locations. The work of TEE can be provided through:

- TEE materials sold at reasonable prices and are available online in places where there are internet services available.
- Conducting TEE Tutor training in places where people are able and willing to pay half of the cost of the travel of the

- trainer, organize their own training programmes and ensure that there are enough students to do the studies.
- Promoting awareness in local churches, Bible Schools and the wider public through all public means, including the print media, NBC, private FM Radio Stations, by e-mail and by personal contacts through the phones and to other secular training institutions as well.
 - Extension of all our existing TEE courses in Bible Schools.

4.3 Core Values

To carry out the mission of CLTC TEE we will be guided by the following core values:

- Evangelical Christian faith and the authority and guidance of the Bible.
- Theological education that is appropriate, contextualized and holistic.
- Establish TEE ministry partnerships with those who are reliable, honest and accountable.
- Knowing God and strengthening spiritual growth for individuals and groups.
- Maintaining relevance and striving for excellence in our TEE programs.

4.4 Ways of Working

For CLTC TEE to pursue its mission, it will work in the following ways among others:

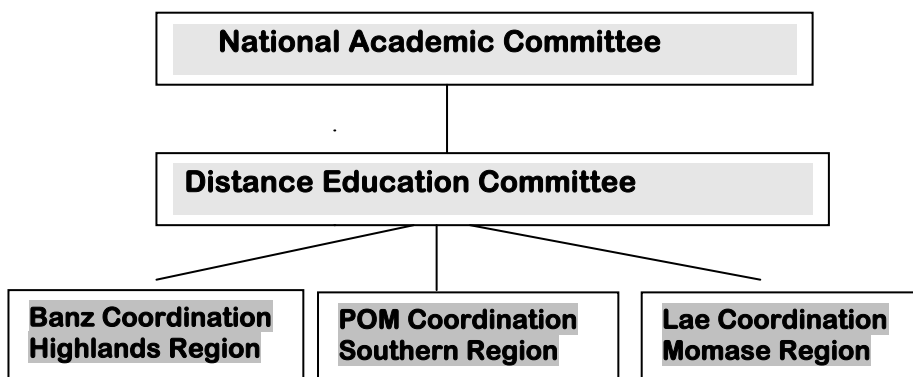
- Work in partnership with churches, ministry groups, Para church organizations and other organized Christian fellowships.
- To provide support to staff working with Bible schools requesting associate school status with CLTC.
- Support church ministries such as Youth groups, Sunday school, Women's fellowships, Religious Instruction and other groups who desire sound biblical teaching.
- By establishing TEE groups in places where the church is inactive, nominal and is affected by secularism and modern development, and in developments such as mining, logging and other major developments.
- Working with CLTC graduates and other members of the alumni association to promote TEE courses.

- Taking advantage of the rapid technological changes and advances happening in PNG and establish links with other likeminded organizations in distance theological education.

4.5 The CLTC Distance Education Committee

The Distance Education committee is made up of senior faculty staff inclusive of the Dean and Assistant Dean of Distance Education with the principal of CLTC.

This Committee will work closely with the Vice Principle Education and Academic Committee. The Distance Education Committee will closely look at issues that need attention and refer them to the Dean of Studies and the Academic Committee.



4.6 Duties of the Distance Education Committee

- Approve strategies of the TEE work
- Help with the management issues of Distance Education.
- Monitor and assess the development of the TEE ministry through regular reporting.
- Evaluate the TEE curriculum through the academic sub-committee.
- Chart future direction of Distance Education in the light the IHE accreditation.
- Start the upgrading of the TEE courses to Diploma level

5. The Distance Education Personnel



Laura Konia
Secretary



Isaac Pulupe
Associate Dean

6. Program Explanation

The Christian Leaders Training College wishes to encourage TEE students to have a commitment to ongoing study and benefit from the full range of our **Discipleship, Bible & Theology and Ministry courses**. This program of study will provide a basic understanding of Bible and Christian belief and the study will also aim to be of practical help to a person's Christian life and ministry.



There will be four certifications upon completion:

- **Certificates for Individual Courses Completed.**
- **Certificate of Attainment**
- **Certificate of Bible and Ministry.**

6.1 CERTIFICATE OF BIBLE & MINISTRY

The Certificate of Bible and Ministry (TEE) is offered at either level 3 or 4 according to the PNG National Qualifications Framework. Isolated students must do it at level 4 and complete the longer answer assignment at the end of each study. Students in tutorial groups can choose to do the extra assignment and qualify for a level 4 certificate or choose not to and qualify for a level 3 certificate.

Students must complete a total of 60 credit points, which is equivalent to 600 hours of learning.

The Certificate of Bible and Ministry is a good preparation for CLTC's diploma program available at its three campuses and can help student gain entry.

6.2 CERTIFICATE OF ATTAINMENT

After completing 20 credit points, students will be awarded a **Certificate of Attainment** signifying that a third of courses required for Certificate of Bible and Ministry has been completed.

Note: For both Certificate of Bible & Ministry and Attainment, students will be allowed to choose courses from own choice to accumulate the required credit points.

6.3 TEE TUTOR CERTIFICATE

After completing a three unit study on TEE tutorial training, the student will be awarded with TEE Tutor Certificate certifying that he/she is capable and recognized by CLTC TEE to organize and supervise a TEE Group.

CLTC TEE will not allow an uncertified person to be a TEE Tutor.

6.4 CERTIFICATE FOR INDIVIDUAL COURSE COMPLETED.

Upon completion of each TEE course, individual certificates will be awarded recommending that the course was satisfactorily completed.

7. How CLTC TEE Works

Before You Enroll...

A **TEE Group** under a registered tutor can enroll in the CLTC TEE program at anytime! If you are interested in doing one of the TEE courses, first try to find an individual who can be the tutor. We will send a tutor's package to the person who wants to start a group. He or she will complete a **Registration Form** and some tutor exercises.

Once a tutor has been approved by CLTC, it is recommended that a 7 to 12 students can form a TEE group. The group must all choose the same course to do. The students in the group then give their completed **Application Forms** and **Basic Enrolment Fees** to the tutor who sends them to the CLTC Distance Education Department.

It will require a commitment of 3- 4 hours of homework per study plus another 1-2 hours for the TEE seminar. Some groups may wish to take longer than one week to do each study or hold seminars fortnightly instead of weekly. As the seminars are a key part of TEE studies, we strongly encourage you to join a TEE group.

If it is not possible to join a TEE group you can apply to be an **isolated student**. As an **Isolated Student** you will work alone and send your completed work to CLTC for marking and grading. There are over five hundred students studying as isolated students all over PNG.

While Studying...

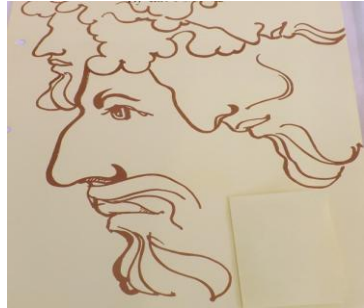
On request a registered TEE group and isolated TEE students can receive CLTC Servant Magazine and Cup TEE, and newsletters from the Dean of TEE. Through these, TEE students will be made to feel a part of CLTC and will be kept informed of the ministry of TEE in PNG and the South Pacific. TEE groups and isolated students are encouraged to inform us of their prayer needs especially in regard to their studies, (through their forwarding address).

8. Current TEE Courses

The following courses are now available:

8.1 STUDIES IN GENESIS

A very important foundation study looking at the message and the meaning of the first great book of the Bible. This course shows how Genesis is truly a “book of beginnings” for the Christian faith.



Part 1 – In The Beginning These studies look at that great span of history in Genesis Chapters 1 - 11 which includes Creation, the Fall, the Flood, and the Start of Nations

Part 2 – The Patriarchs Walk through Genesis Chapters 12-50 in the steps of the Patriarchs; Abraham, Isaac, Jacob and Joseph learning valuable lessons from their lives.

8.2 OLD TESTAMENT SURVEY

This course is designed to give you an overview of the 39 books of the Old Testament. The course helps to make the Old Testament come alive. It also builds a historical and theological framework valuable for any future in-depth Bible Study.

Part 1 - The Five Books of Moses and the other historical books of The Old Testament - Genesis to Deuteronomy

Part 2 - The Historical Books Joshua – Esther Prophets and The Wisdom Writings - Job to Malachi (not yet available).



8.3 STUDIES IN DISCIPLESHIP

A course which shows clearly how Christ's call to discipleship is for all Christians and what this means for your daily life. It outlines the steps necessary for each Christian to keep growing and moving along the road to deeper and more complete discipleship. A very worthwhile course for both new and old Christians.

Part 1 – Come Follow Me dwells on the meaning of discipleship and how a Christian grows in discipleship living under Christ's Lordship.

Part 2 – Follow In His Steps looks at the dangers of discipleship and the challenges of living under Christ's lordship

Part 3 – Go and Make Disciples looks at how to obey the great commission through sharing the gospel and discipling others in your world and beyond.



8.4 STUDIES IN THE LIFE OF CHRIST.

This course introduces you to the One who changed the world and who continues to change many lives today. The studies join together the four gospel accounts of Jesus' time spent on earth into one story showing the purpose, plan and significance of Jesus life and ministry.

Part 1 – The First Coming of Jesus looks at the life of Christ from His birth, right through to the end of the second year of His public ministry. This part also teaches a method of personal Bible study



Part 2 – The Public Ministry of Jesus looks at the final awe-inspiring year of Jesus' public ministry. This part also teaches the principles of Bible study group leadership.

Part 3 - The Sacrifice and Triumph of Jesus looks at the awesome climax of Jesus' public ministry, his death, resurrection, and ascension

8.5 STUDIES IN CHRISTIAN WORSHIP

Come Let Us Worship This course is gladly offered to those who want to deepen their own experience of worship and who want to lead God's people into deeper experiences of worship also. Worshipping God is presented as an activity which includes all of life, thereby showing that worship was the very reason for which man was made.



8.6 STUDIES IN EPHESIANS

Explore the book of Ephesians and see more of God's amazing plan for us and for the whole universe. This course will show you how God's plan centers in Christ and the important place of His Church in this plan. The course shows how we have power over Satan and evil spirit powers. It shows how through God's great love for us and His power working through us we can lead lives pleasing to Him. This study also gives you some tools for Bible study that you will be able to use on your own with other books of the Bible.



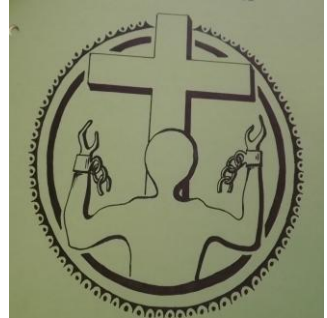
Part 1- One in Christ covers Ephesians chapters 1 and 2

Part 2- Living for Christ covers Ephesians chapters 3 and 4

-

8.7 STUDIES IN GALATIANS

Are all religions leading the same way? What makes a true Christian? How does the traditional religion of our ancestors fit with the Christian way? What does it mean to be a “Spirit-filled” person? What is freedom and what does it mean to be truly free? Probe the book of Galatians through this course and see why Paul’s letter to the church of Galatia has been called “spiritual dynamite”! This study gives study tools you will be able to use in studying other books of the Bible.



Part 1 - Faith In Christ Covers Galatians Chapters 1 and 2

Part 2 - Freedom In Christ covers Galatians chapters 3 to 6

8.8 STUDIES IN FIRST CORINTHIANS

Study Paul’s first letter to the troubled Church at Corinth and see how it is relevant for today. In this course you will deal with the many problems Christians face in their individual lives and in living together with others. It covers problems like Divisions, Christian Conduct, Marriage, Christian Freedom, Worship and Spiritual Gifts. God’s answers to these problems are sought to enrich and strengthen your own Christian life and the life of your church.



Part 1- To Live in Peace covers 1Corinthians chapters 1 to 10

Part 2- The Way of Love covers 1Corinthians chapters 11 to 16

8.9 CHRISTIAN MARRIAGE AND FAMILY LIFE

Instead of marriage being the closest, strongest and most beautiful relationship on earth, it is often marked with strife, conflict and unhappiness. In this course we return to our Maker’s instruction book - the Bible so that we can better follow His



plan for marriage. If you are a single person who expects to get married or a married person whose marriage needs a little help, encouragement or enrichment, then this is the course for you. Husband and wife are strongly encouraged to do this course together.

Part 1- Foundations of Christian Marriage - these studies look at the biblical foundation teachings on marriage, answering the questions - “what is a Christian marriage?”, and “what makes a marriage grow?”

Part 2- The Christian Single - deals with the single years and the matters of choosing a partner and preparing for marriage

Part 3- The Christian Family - concentrates on building Christian home and finding fulfilment, forgiveness, and renewal in the marriage relationship.

Please note that Parts 1-3 must be completed by all (singles and marrieds) before they undertake Part 2. Singles however may do Part 2 before completing Part 1.

8.10 TRAINING COURSE IN CHILDREN’S MINISTRY

This course will help you to become a more effective children’s worker. This may be as a Sunday School Teacher, a Religious Instruction (RI) teacher in a school, or a leader or helper in other work such as camps or children’s clubs. Through this course you will be able to help children come to Jesus and to know God.



Part 1 – Help the Children Come covers some of the basic things you need to know to become a successful children’s ministry teacher. It leads you through the skills and knowledge you need to know to prepare a good lesson for children.

Part 2 – Help the Children Grow- builds on the things learned in Part 1. It looks at the children’s spiritual lives and some of the practical parts of teaching them.

8.11 STUDIES IN MISSIONS AWARENESS

Launch Out. This course looks at the challenge of missions for the local churches of the South Pacific. It uses the example of South Pacific Island missionaries who took the gospel across the Pacific in their deep-sea canoes. The course uses a number of illustrations from the South Pacific. It shows how the



local church can be involved in world missions by praying, giving or going. It will be a great help to anyone who has a heart to learn more about the world and missions.

8.12 STUDIES IN MISSIONS HISTORY

How did the Gospel come to the South Pacific? How was the Church established in this region? It was because the South Pacific Island Christians responded to the Great Commission. What challenges does this have for us today? In this course you will read stories of the spread of the Gospel across the South Pacific and the growth of the Church. Dr Alan R Tippet’s book “**The Deep Sea Canoe**” is the text book for both parts of this course.



Part 1- The Deep Sea Canoe focuses on the ministry of island missionaries in the expansion of Christianity in the South Pacific. (6 Units of Study fee including text book. *The Deep Sea Canoe* (Book) by A R Tippet- 20 weeks)

Part 2 – Mission to the Islands looks at more stories from the South Pacific that highlight many lessons about missions, church

growth, leadership, and cultural anthropology (6 units of study using the same textbook as part 1- 20)

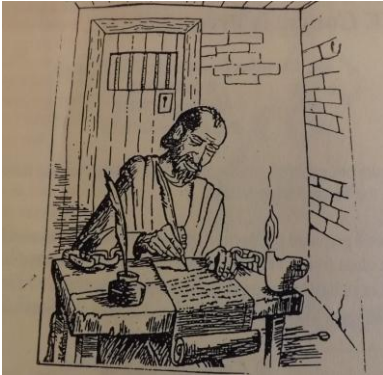
8.13 STUDIES IN THE LIFE OF DAVID

After Gods' own Heart David is known as the "man after Gods' own heart" looks at the life of David, with the aim of helping you to become more and more a man or woman after Gods' own heart.



8.14 TEE TUTOR TRAINING

Take the Teachings.



Take the teachings is a three unit course written to train TEE Tutors by taking you through a TEE Tutors' Guide book. By doing the course you will become familiar with the ministry of TEE and the work of a TEE tutor. Completion of this course is a requirement for all TEE tutors.

8.15 YOUTH MINISTRY

Working with Young People.

If you walk down the streets of any South Pacific city, you will see many young people. A lot of villages have many young people too. In fact, people under the age of 25 make up almost 2/3 of most Pacific Island populations. The young people we call teenagers, or youth are not children anymore, but they are not quite adults and they have some unique needs. Many churches have also found a need to focus ministry

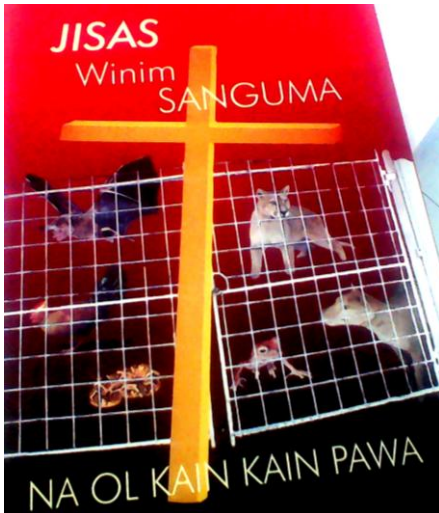


on young people. Those who do it well find that young people make an important contribution to church life; they can give a real lift to a church.

The aim of this course is to help you become an effective Christian youth worker. It will help *you* to help *young people* come to *know Jesus* and *become more like Him*. Because it comes from the Christian Leaders Training College in Papua New Guinea, it emphasizes PNG cultures in some parts, but most of the course is relevant for all Pacific cultures

8.16 SORCERY PART 1 & 2

Freedom from the fear and Power of Sorcery



Is a nine unit course dividing studies 1 – 4 as part one, and studies 4 – 9 as part two. The studies were designed to teach believers that they have the power through their union with Christ to defeat any demonic powers. Going through the studies would liberate one from fear and gain confident to rebuke and triumph over satanic powers such as sorcery and others. The course is also available in tok pidgin.

8.17 REACHING THE CHILDREN

This book contains seminars specifically designed for training children's workers, whether in a Bible school, or as special training classes for Sunday school or religious instruction teachers

9. About Course Fees & Payment

The Fees for CLTC TEE courses range between the minimum of K15 and maximum of K50 for courses sold at CLTC Banz Campus. The fee range at CLTC POM and Lae Campus may have slight difference as determined by their cost of operation.

The fees that are charged for TEE courses are not meant for generating an income for CLTC. Since 1975 CLTC never made any profit out of selling TEE courses. Fees have never been sufficient to cater all the needs of Distance Education administration, yet God provides other means to keep it going for God himself established this ministry for a purpose.

As much as possible avoid sending cash in the mail when purchasing study materials. Please send fees by cheque, postal money orders, registered mail or Salim Moni Kwik. For salim moni kwik, please let us know the SMK number, date, amount and name of sending post office.

The most convenient way would be to deposit fees at your nearest Westpac Bank or Bank South Pacific and email us the bank receipt.

TEE materials will be dispatched immediately after your bank receipt is acknowledged. However if you are at a situation where you don't have access to both email, you call us and let us know of your deposit. Then after our finance team confirm of your deposit we will disperse your study materials.

Please note the bank detail hereunder:

CLTC, WESTPAC BANK Account

Acct/Name, CLTC PNG Incorporation

BSB: 38038

Acc Number: 6001803621

Acc Branch: MT HAGEN WHP PNG.

CLTC BANK SOUTH PACIFIC (BSP) Account

Acct/Name, CLTC Education

BSB: 088307

A/C, NO.1005229800

Acc Branch: MT HAGEN WHP PNG.

10. Course List and Fees (English)

TEE COURSES & FEES					
STUDY STRANDS	NUMBER	COURSES	COURSE NAMES	No. STUDIES	FEES
DISCIPLESHIP COURSES	1	Discipleship Part 1	Come Follow Me	7	K40
	2	Discipleship Part 2	Follow in His Steps	5	K30
	3	Discipleship Part 3	Go and Make Disciples	7	K50
	4	Worship	Come let us Worship	8	K40
	5	Christian Marriage Part 1	The Foundations of Christian Marriage	7	K40
	6	Christian Marriage Part 2	The Christian Single	2	K25
	7	Christian Marriage Part 3	The Christian Family	6	K30
	8	After God's Own Heart	To Live a Godly Life	7	K50
	9	Sorcery Part 1&2	Freedom from the Fear & Power of Sorcery	9	K25
BIBLE & THEOLOGY COURSES	10	Old Testament Survey Part 1	The Five Books of Moses	7	K40
	11	Old testament Survey Part 2	The Historical Books	7	K40
	12	Genesis Part 1	In the Beginning (Genesis Chaps 1 - 11)	8	K40
	13	Genesis Part 2	The Patriachs (Genesis chaps 12 - 50)	9	K45
	14	Life of Christ Part 1	The First Coming of Jesus	7	K35
	15	Life of Christ Part 2	The Public Ministry of Jesus	10	K45
	16	Life of Christ Part 3	The Sacrifice & Triumph of Jesus	7	K35
	17	1Corinthian Part 1	To Live in Peace (1Corinthians Chaps 1-10)	7	K35
	18	1Corinthian Part 2	The Way of Love (1Corinthians Chaps 11-16)	5	K30
	19	Galatians Part 1	Faith in Christ (Galatians Chaps 1-2)	4	K30
	20	Galatians Part 2	Freedom in Christ (Galatians Chaps 3-6)	5	K30
	21	Ephesians Part 1	One in Christ (Ephesians Chaps 1-2)	5	K30
	22	Ephesians Part 2	Living for Christ (Ephesians Chaps 3-4)	5	K35
MINISTRY COURSES	23	Children's Ministry Part 1	Help the children come	6	K35
	24	Children's Ministry Part 2	Help the Children Grow	6	K35
	25	Reaching the Children	Children Ministry	7	K10
	26	Missions Awareness	Launch Out	8	K45
	27	Missions History Part 1	Deep Sea Canoe (Preface & Chaps 1-5)	6	K40
	28	Missions History Part 2	Mission to the Islands (Chaps 6-11)	6	K30
	29	Youth Ministry	Working with young People	6	K40
	30	TEE Tutor Training	Take the teaching	3	K35

Pidgin Courses and Fees

Namba	Nem blo kos	Stadi total	Fi
1	Yu Kam Bihainim Mi – Buk 1	5 Unit	K20
2	Yu Kam Bihainim Mi – Buk 2	11 Unit	K20
3	Yu Kam Bihainim Mi – Buk 3	9 Unit	K20
4	Lotu tru long God	8 Unit	K20
5	Gutnius Mak I Raitim	15 Unit	K20
6	Wok bilong ol Aposel – Buk 1	7 Unit	K20
7	Wok bilong ol Aposel – Buk 2	7 Unit	K20
8	Revelesen – Buk 1	15 Unit	K20
9	Revelesen – Buk 2	15 Unit	K20
10	1 Korin – Buk 1	6 Unit	K20
11	1 Korin – Buk 2	6 Unit	K20
12	1 Korin – Buk 3	6 Unit	K20
13	1 Korin – Buk 4	6 Unit	K20
14	Efesus – Buk1	5 Unit	K20
15	Efesus – Buk 2	5 Unit	K20
16	Kristen Marit na Fmili Laip – Buk 1	10 Unit	K20
17	Kristen Marit na Fmili Laip – Buk 2 Blo marit manmeri	12 Unit	K20
18	Kristen Marit na Fmili Laip – Buk 3 Blo single manmeri	1 Unit	K20
19	Karim tok bilong God igo Blo kamap TEE Tuta	1 Unit	K20
20	Lukluk long Olpela Testamen - Buk 1	8 Unit	K20
21	Lukluk long Olpela Testamen - Buk 2	4 Unit	K20
22	Lukluk long Olpela Testamen - Buk 3	5 Unit	K20
23	Buk Stat (sapta12-22) – Buk 3	4 Unit	K20
24	Skulim ol Pikinini	1 Unit	K20
25	Hibru – Buk 1	6 Unit	K15
26	Hibru – Buk 2	6 Unit	K15
27	Jisas I winim Sanguma – Buk 1na 2	9 Unit	K15

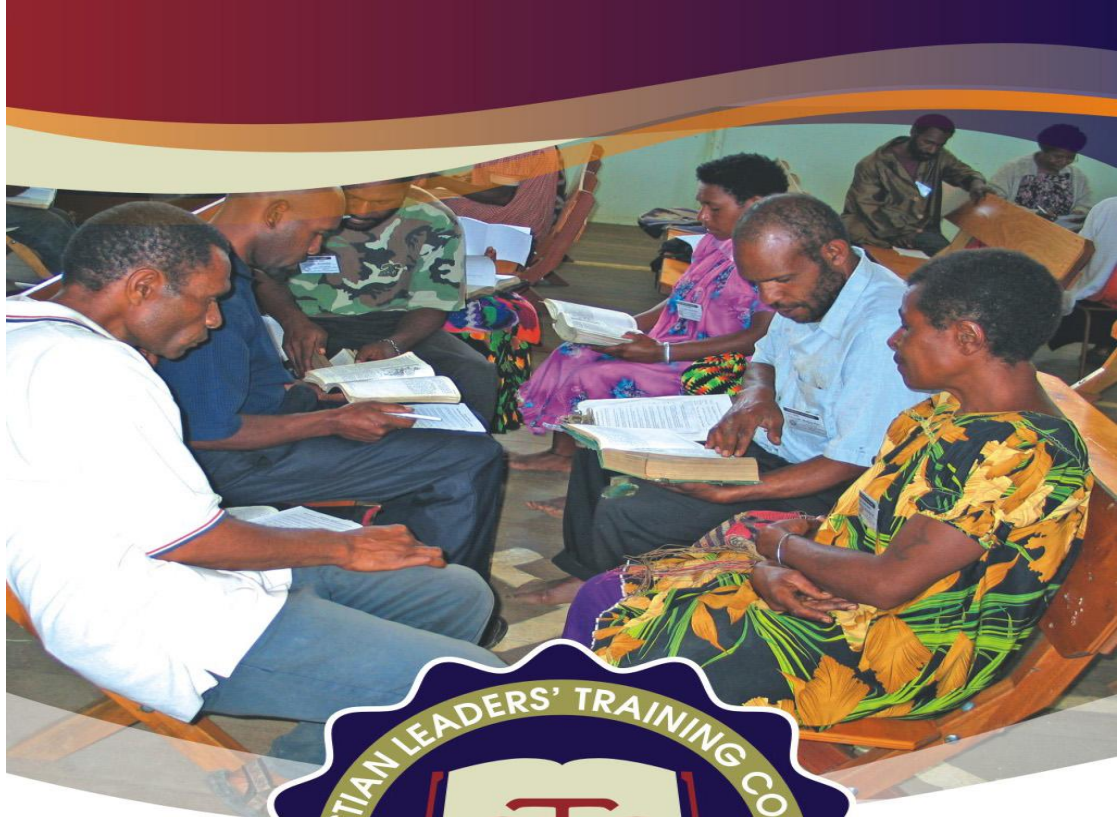
For further Information contact;

Isaac Pulupe
Associate Dean
Distance Education
PO Box 382,
Mt Hagen , WHP
Email: ipulupe@cltc.ac.pg
Digicel: +675 71887357

Laura Konia Paul
Secretary/ Office Manager
Email: lkoniapaul@cltc.ac.pg
Digicel: +67571704664

Port Moresby
John Prasad
Southern Region TEE Coordinator
CLTC POM Campus
P O Box 2800
BOROKO,NCD
Email: jprasad@cltc.ac.pg
Phone: +675 75910561

Lae
Moses Bakura
Momase Region TEE Coordinator
CLTC Lae Campus
P O Box 2403, LAE MP
Email: mbakura@cltc.ac.pg
Phone: +675 75910559



**Partner with Us in Equipping
Christian Leaders for
Papua New Guinea and the Pacific**

